



# DUCT RODDERS



## Duct Rodders

Condux Duct Rodders combine ease of operation and reliable performance to help increase the efficiency of your rodding operations.

Condux Duct Rodder cages have been designed to be lighter weight for easy handling in the field. They feature sturdy construction and a hand-operated wheel brake. They can be used on their side as well as upright. The 30" (762 mm) and 45" (1,143 mm) cages come with wheels for added mobility. Cage sizes are matched to suit the rod you order.

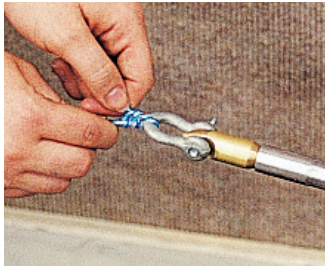
## End Fittings Included

Condux Duct Rodders come equipped with a threaded end fitting on each end, and a tapered head on the outward end. Condux offers a number of optional end fitting accessories for additional applications.

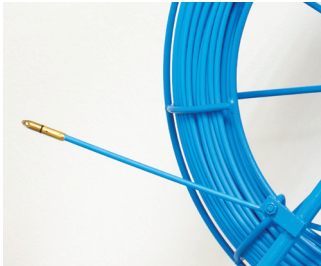
## Easy to Order

Simply refer to the charts in this section to determine the diameter of rod you need.

All Duct Rodders come standard with a repair kit.



Duct rodder accessories (pgs. 16 - 19) are available to fit your rodding application.



End fittings are included with Condux duct rodders. See Duct Rodder Accessories for size and part number (pgs 16 - 19).



Condux duct rodders feature sturdy construction and reliable performance.



Hand-operated wheel brake adds control and safety.

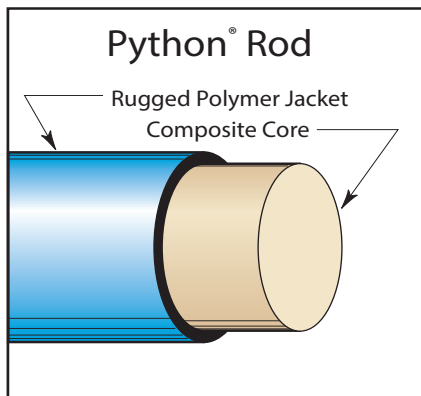
## Duct Rodder Specifications

Duct Rod Diameter		Duct Rod Pull Strength		Core OD**		Coating OD*		Minimum Bending Radius	
(in)	(mm)	(lbs)	(n)	(in)	(mm)	(in)	(mm)	(in)	(mm)
3/16	5	200	890	.125	3.2	.187	4.8	3	76
1/4	6	350	1,557	.187	4.8	.250	6.3	5	127
5/16	8	950	4,226	.237	6.0	.312	7.9	7	178
7/16	11	950	4,226	.300	7.6	.437	11.1	11	280
9/16	13	1,400	6,227	.375	9.5	.500	13.0	11	280

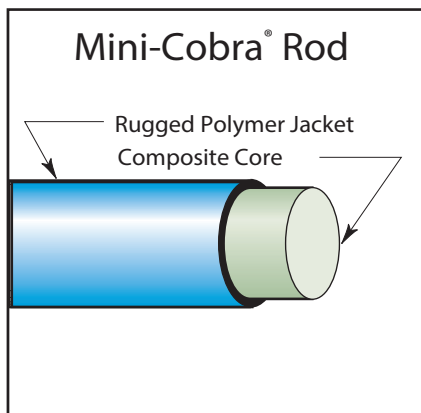
\*\*Core O.D. Tolerance ±.007" (.2 mm); \*Coating O.D. Tolerance ±.015" (.4 mm).

## Two Types of Rod

Each Condux duct rodder has a glass reinforced composite core jacketed in a rugged plastic coating to ensure long life. They have excellent flexural strength, compressive strength, fatigue resistance, and memory. They also have favorable electrical and thermal properties that make them safe for use in cable-occupied duct. They are suitable for pulling back winch line or small diameter cable.



**PYTHON®:** The Python rod has flexibility and it has a heavy-duty outer plastic coating to resist abrasions and reduce wear. Includes one male and one female end fitting, and a tapered head.



**MINI-COBRA®:** Condux's Mini-Cobra includes  $\frac{3}{16}$ " (5 mm) and  $\frac{1}{4}$ " (6 mm) diameter rods used primarily for smaller duct sizes and shorter runs. The rod has the same flexibility and strength features of the Python rod and comes wound in 16" (406 mm) and 24" (610 mm) cages in 50' (25 m) to 600' (200 m) lengths. Includes two male end fittings and two tapered heads.

**REPLACEMENT ROD:** Replacement rod is available for all Condux Duct Rodders. Please contact Condux Customer Service to place your order. Have your existing duct rodder part number ready to ensure an accurate match. Replacement rod comes with end fittings and tapered heads in a disposable replacement cage.

RECOMMENDED DUCT RODDER SIZES FOR CONDUIT													
Conduit Size	1/2" (13mm)	3/4" (19mm)	1" (25mm)	1 1/4" (32mm)	1 1/2" (38mm)	2" (51mm)	2 1/2" (64mm)	3" (76mm)	3 1/2" (89mm)	4" (102mm)	5" (127mm)	6" (152mm)	8" (203mm)
Recommended Duct Rodder Size(s)	3/16" (5mm)	3/16" (5mm)	3/16" (5mm) 1/4" (6mm)	3/16" (5mm) 1/4" (6mm)	1/4" (6mm) 5/16" (8mm)	1/4" (6mm) 5/16" (8mm)	1/4" (6mm) 5/16" (8mm)	5/16" (8mm) 7/16" (11mm) 9/16" (13mm)	5/16" (8mm) 7/16" (11mm) 9/16" (13mm)	5/16" (8mm) 7/16" (11mm) 9/16" (13mm)	7/16" (11mm) 9/16" (13mm)	7/16" (11mm) 9/16" (13mm)	9/16" (13mm)

\*Conduit sizes based on standard radius bends and should be considered minimums. A larger diameter rod than what is listed is not recommended. Please call your Condux representative for assistance.



# DUCT RODDERS

## Duct Rodders (U.S. Threads - USC)

**!** ORDER CAREFULLY  
This item is made-to-order  
and is not returnable.

3/16" MINI-COBRA ROD		
<b>#12-24 End Fitting 16" Cage</b>		
<i>Use for duct size .5" - 1.25"</i>		
Part Number	Length (l)	Replacement Rod
08072405	50	08073605
08072410	100	08073610
08072415	150	08073615
08072420	200	08073620
08072425	250	08073625
08072430	300	08073630

1/4" MINI-COBRA ROD		
<b>5/16"-18 End Fitting 24" Cage</b>		
<i>Use for duct size 1" - 2.5"</i>		
Part Number	Length (l)	Replacement Rod
08072510	100	08073710
08072515	150	08073715
08072520	200	08073720
08072525	250	08073725
08072530	300	08073730
08072535	350	08073735
08072540	400	08073740
08072545	450	08073745
08072550	500	08073750
08072555	550	08073755
08072560	600	08073760

5/16" PYTHON ROD		
<b>3/8"-16 End Fitting 30" Cage</b>		
<i>Use for duct size 1.5" - 4"</i>		
Part Number	Length (l)	Replacement Rod
08084320	200	08082320
08084330	300	08082330
08084340	400	08082340
08084350	500	08082350
08084360	600	08082360
08084370	700	08082370
08084380	800	08082380
08084390	900	08082390
08084310	1000	08082310

7/16" PYTHON ROD		
<b>3/8"-16 End Fitting 45" Cage</b>		
<i>Use for duct size 3" - 6"</i>		
Part Number	Length (l)	Replacement Rod
08083920	200	08086520
08083930	300	08086530
08083940	400	08086540
08083950	500	08086550
08083960	600	08086560
08083970	700	08086570
08083980	800	08086580
08083990	900	08086590
08083910	1000	08086510
08083911	1100	08086511
08083912	1200	08086512
08083913	1300	08086513
08083914	1400	08086514
08083915	1500	08086515

9/16" PYTHON ROD		
<b>3/4"-10 End Fitting 45" Cage</b>		
<i>Use for duct size 3" - 8"</i>		
Part Number	Length (l)	Replacement Rod
08083220	200	08075720
08083230	300	08075730
08083240	400	08075740
08083250	500	08075750
08083260	600	08075760
08083270	700	08075770
08083280	800	08075780
08083290	900	08075790
08083210	1000	08075710

\*all duct rodders come standard with a repair kit

### Footage Marks

Optional footage marks are available on 5/16", 7/16" and 9/16" Python duct rod. Order footage marks by adding an F to the end of the existing part number. Footage marks are every two feet.

**Example:** If you were ordering 7/16" Python Rod, 1400 feet long you would order: 08083914F.

Additional charges apply.



## Duct Rodders (Metric)

5MM MINI-COBRA ROD		
<b>M5 End Fitting 406mm Cage</b>		
<i>Use for duct size 13 - 32mm</i>		
Part Number	Length (m)	Replacement Rod
08072602	25	08072702
08072605	50	08072705
08072607	75	08072707
08072610	100	08072710

6MM MINI-COBRA ROD		
<b>M8 End Fitting 610mm Cage</b>		
<i>Use for duct size 25 - 64mm</i>		
Part Number	Length (m)	Replacement Rod
08072802	25	08072902
08072805	50	08072905
08072807	75	08072907
08072810	100	08072910
08072812	125	08072912
08072815	150	08072915
08072817	175	08072917
08072820	200	08072920

8MM PYTHON ROD		
<b>M12 End Fitting 762mm Cage</b>		
<i>Use for duct size 38 - 102mm</i>		
Part Number	Length (m)	Replacement Rod
08075205	50	08076405
08075207	75	08076407
08075210	100	08076410
08075212	125	08076412
08075215	150	08076415
08075217	175	08076417
08075220	200	08076420
08075225	250	08076425
08075230	300	08076430

11MM PYTHON ROD		
<b>M12 End Fitting 1143 Cage</b>		
<i>Use for duct size 76 - 152mm</i>		
Part Number	Length (m)	Replacement Rod
08078505	50	08078605
08078507	75	08078607
08078510	100	08078610
08078512	125	08078612
08078515	150	08078615
08078517	175	08078617
08078520	200	08078620
08078525	250	08078625
08078530	300	08078630
08078535	350	08078635
08078540	400	08078640
08078545	450	08078645

13MM PYTHON ROD		
<b>M12 End Fitting 1143 Cage</b>		
<i>Use for duct size 76 - 203mm</i>		
Part Number	Length (m)	Replacement Rod
08078705	50	08079305
08078707	75	08079307
08078710	100	08079310
08078712	125	08079312
08078715	150	08079315
08078717	175	08079317
08078720	200	08079320
08078725	250	08079325
08078730	300	08079330

## Metric Marks

Optional metric marks are available on 8 mm, 11 mm and 13 mm Python duct rod. Order metric marks by adding an M to the end of the existing part number. Metric marks are every meter.

**Example:** If you were ordering 11 mm Python Rod, 400 Meters long you would order: 08078540M.

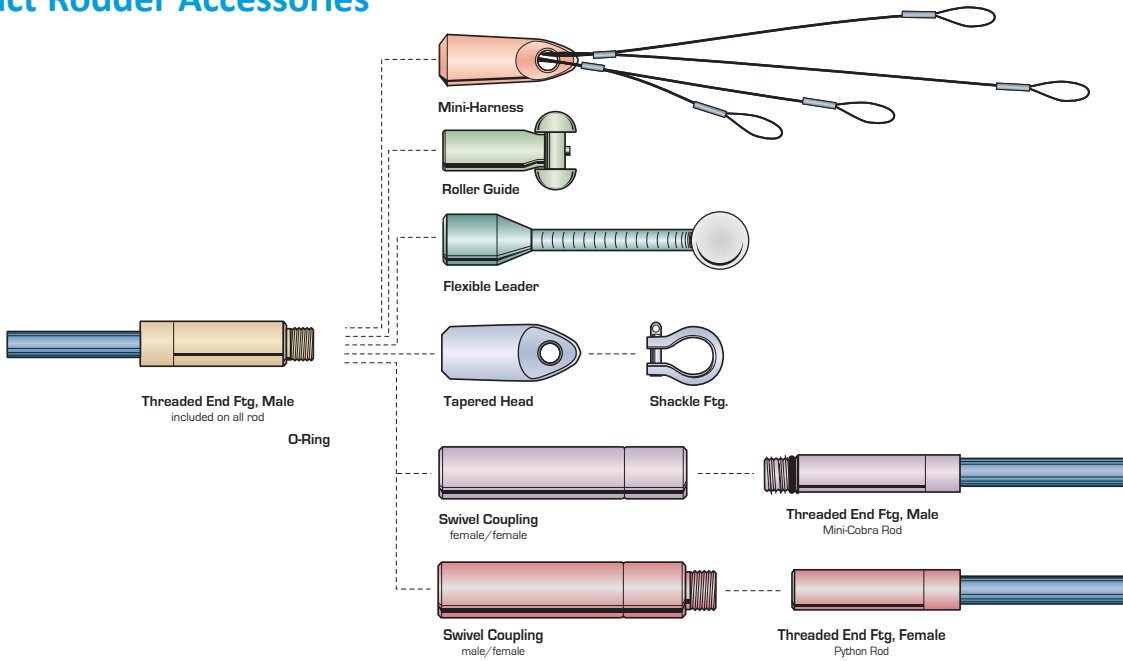
Additional charges apply.





# DUCT RODDER ACCESSORIES

## Duct Rodder Accessories



### Accessory Kit

Popular accessories available in a convenient bag that attaches to the cage. Kit Includes: Canvas Bag, Roller Guide, Splice Kit, Epoxy, Swivel Coupling, Tapered head, and Threaded End Fittings.

Rod Dia., in (mm)	3/16 (5)	1/4 (6)	5/16 (8)	7/16 (11)	9/16 (13)
USC Thread	#12-24	5/16-18	3/8-16	3/8-16	3/4-10
Accessory Kit	08033498	08033499	08033497	08033494	08033488
Metric Thread	M5	M8	M12	M12	M12
Accessory Kit	08033492	08033493	08033496	08033495	08033489

\*Kits for 3/16" (5 mm) and 1/4" (6 mm) rod also include a Flexible Leader and O-Rings.

Bag Only 08033490



### Repair Kit

Replacement repair kit that comes standard with duct rod. Accessories available in a convenient bag that attaches to the cage.

Rod Dia., in (mm)	3/16 (5)	1/4 (6)	5/16 (8)	7/16 (11)	9/16 (13)
Replacement Kit	08035770	08035772	08035774	08035776	08035778

### Splice Kit

Use to repair the duct rod if it breaks. Kit includes: Splice Tube, Epoxy and installation instructions.



Rod Dia., in (mm)	3/16 (5)	1/4 (6)	5/16 (8)	7/16 (11)	9/16 (13)
Splice Kit	08033457	08033465	08035753	08035751	08035752
Splice Tube Only	08033455	08033463	08035703	08035701	08035702

### Epoxy

Use with End Fittings or Splice Tubes to repair Duct Rodders.

Part Number	Description
08035851	Single pack for replacing end fittings
08035852	Double pack for splice tubes

## Mini Harness

Screws onto the threaded end fitting to allow for easy wire attachment when pulling wire into conduit.

Rod Dia., in (mm)	3/16 (5)	1/4 (6)	5/16 (8)	7/16 (11)	9/16 (13)
USC Thread	#12-24	5/16-18	3/8-16	3/8-16	3/4-10
Mini Harness	08033433	08033434	08033435	08033435	08033436
Metric Thread	M5	M8	M12	M12	M12
Mini Harness	08033432	08033431	08033437	08033437	08033437

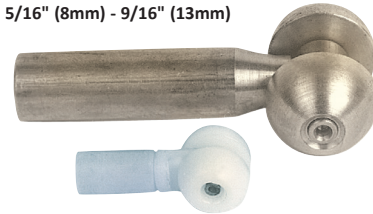


## Roller Guide

Helps guide the duct rod around bends, sweeps, and duct misalignments. Also used when the conduit is already occupied by other cables.

US Duct Rodders Rod Diameter (in)	USC Thread	Roller Guide Part Number	Duct Range I.D. (in)
3/16	#12-24	08037430	.50 - 1.25
1/4	5/16-18	08037440	1.00 - 2.50
5/16	3/8-16	08037460	1.50 - 6.00
5/16	3/8-16	08037401	2.50 - 6.00
7/16	3/8-16	08037401	2.50 - 6.00
9/16	3/4-10	08037400	3.00 - 8.00
Metric Duct Rodders Rod Diameter (mm)	Metric Thread	Roller Guide Part Number	Duct Range I.D. (mm)
(5)	M5	08037428	12.7 - 32
(6)	M8	08037450	25 - 63
(8)	M12	08037405	63 - 152
(11)	M12	08037405	63 - 152
(13)	M12	08037405	76 - 203

5/16" (8mm) - 9/16" (13mm)



3/16" (5mm) - 1/4" (6mm)

## Flexible Leader

Helps guide the duct rod around bends, sweeps, and duct misalignments.

Rod Dia., in (mm)	3/16 (5)	1/4 (6)	5/16 (8)	7/16 (11)	9/16 (13)
USC Thread	#12-24	5/16-18	3/8-16	3/8-16	3/4-10
Flexible Ldr.	08033423	08033443	08037538	08037538	08037534
Metric Thread	M5	M8	M12	M12	M12
Flexible Ldr.	08033448	08033444	08037512	08037512	08037512



## Shackle Fitting

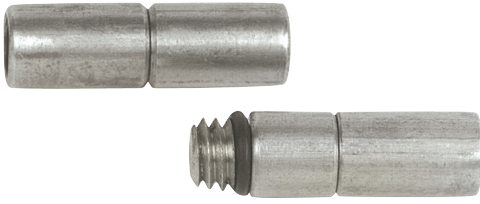
Fits onto Tapered Head to provide a larger pulling loop for attaching the rope or pull line.

Rod Dia., in (mm)	3/16 (5)	1/4 (6)	5/16 (8)	7/16 (11)	9/16 (13)
USC Thread	#12-24	5/16-18	3/8-16	3/8-16	3/4-10
Shackle Fitting	-	-	08031101	08031101	08031100
Metric Thread	M5	M8	M12	M12	M12
Shackle Fitting	-	-	08031101	08031101	08031101





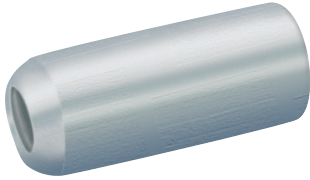
# DUCT RODDER ACCESSORIES



## Swivel Coupling

Used to connect two duct rods pushed into the conduit from the same end. Used when one length of duct rod is not long enough for the full conduit run. Also used as a rotating swivel when pulling wire or rope with the Tapered Head or Mini-Harness.

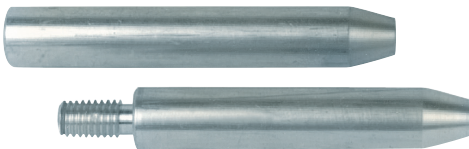
Rod Dia., in (mm)	3/16 (5)	1/4 (6)	5/16 (8)	7/16 (11)	9/16 (13)
<b>USC Thread</b>	#12-24	5/16-18	3/8-16	3/8-16	3/4-10
Female/Female	08033470	08033459	-	-	-
Male/Female	08033422	08033442	08036800	08036800	08036700
<b>Metric Thread</b>	<b>M5</b>	<b>M8</b>	<b>M12</b>	<b>M12</b>	<b>M12</b>
Female/Female	08033429	08033483	-	-	-
Male/Female	08033426	08033485	08036806	08036806	08036806



## Sonde Adapter

Couples a locating sonde or other device with an M10 male thread to the male end fitting of the duct rod. Specify sonde, thread and rodder.

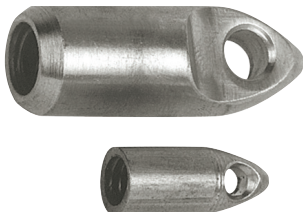
Rod Dia., in (mm)	3/16 (5)	1/4 (6)	5/16 (8)	7/16 (11)	9/16 (13)
<b>USC Thread</b>	#12-24	5/16-18	3/8-16	3/8-16	3/4-10
Sonde Adapter	-	08036500	08036503	08036503	08036504
<b>Metric Thread</b>	<b>M5</b>	<b>M8</b>	<b>M12</b>	<b>M12</b>	<b>M12</b>
Sonde Adapter	-	08036505	08036501	08036501	08036501



## Threaded End Fittings

Use as a replacement to the factory installed end fittings if the end fitting breaks off or if the duct rod breaks close to the end of the rod. Installation instructions are included with the end fittings. Epoxy is required for installation and is ordered separately.

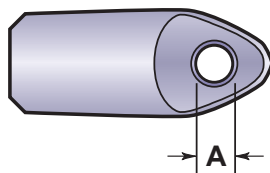
Rod Dia., in (mm)	3/16 (5)	1/4 (6)	5/16 (8)	7/16 (11)	9/16 (13)
<b>USC Thread</b>	#12-24	5/16-18	3/8-16	3/8-16	3/4-10
Male	08033420K	08033440K	08036307K	08036303K	08036005K
Female	-	-	08036306K	08036304K	08036006K
<b>Metric Thread</b>	<b>M5</b>	<b>M8</b>	<b>M12</b>	<b>M12</b>	<b>M12</b>
Male	08033487	08033486	08036318	08036319	08036316
Female	-	-	08036317	08036314	08036315



## Tapered Head

Attaches to the end fitting on the duct rod. Guides duct rod through the conduit and allows a pull line (diameter A) to be attached to the duct rod. Comes standard with each of the duct rod ders.

Rod Dia., in (mm)	3/16 (5)	1/4 (6)	5/16 (8)	7/16 (11)	9/16 (13)
<b>USC Thread</b>	#12-24	5/16-18	3/8-16	3/8-16	3/4-10
Tapered Head	08033421	08033441	08038400	08038400	08038300
Diameter A	.156 (4)	.156 (4)	.281 (7)	.281 (7)	.343 (9)
<b>Metric Thread</b>	<b>M5</b>	<b>M8</b>	<b>M12</b>	<b>M12</b>	<b>M12</b>
Tapered Head	08033410	08033480	08038301	08038301	08038301
Diameter A	.156 (4)	.156 (4)	.281 (7)	.281 (7)	.281 (7)





# DUCT RODDER ACCESSORIES

## O-Rings

Used to help keep accessories on the end fitting while rodding. Comes standard with the Mini-Cobra rodders.

Rod Dia., in (mm)	3/16 (5)	1/4 (6)	5/16 (8)	7/16 (11)	9/16 (13)
USC Thread	#12-24	5/16-18	3/8-16	3/8-16	3/4-10
O-Rings	02163600	02215000	-	-	-
Metric Thread	M5	M8	M12	M12	M12
O-Rings	02163600	02215000	-	-	-



## Duct Rodder Replacement Brake Handles

Use Condux Duct Rodder Replacement Brake Handles to replace missing or damaged handles on existing cages.

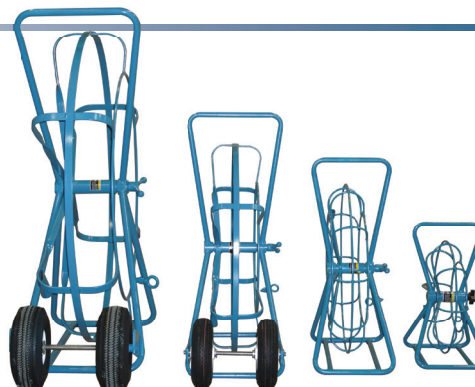
Part No.	Description
02218300	16" (406 mm) Duct Rodder Replacement Brake Handle
08081547	24" (610 mm) Duct Rodder Replacement Brake Handle
08081547	30" (762 mm) Duct Rodder Replacement Brake Handle
08081567	45" (1,143 mm) Duct Rodder Replacement Brake Handle



## Duct Rodder Replacement Cages

Use Condux Duct Rodder Replacement Cages to update older cages or to replace damaged cages. Fits all major manufacturers' fiberglass rods.

Rod Dia., in (mm)	3/16 (5)	1/4 (6)	5/16 (8)	7/16 (11)	9/16 (13)
Replacement Cage	08081516R	08081524R	08081530R	08081550R	08081550R



45" (1143 mm)      30" (762 mm)      24" (610 mm)      16" (406 mm)

## Fiberglass Hand Rods

Screw together fiberglass duct rods for straight runs. All rods equipped with 3/4"-10 end fittings. 2,500 lbs. (11,120 N) pull rating.

Part Number	Size (in x ft)	Size (mm x m)
08032026	5/8 x 5	16 x 1.5
08032022	5/8 x 10	16 x 3



## Replacement Hand Rod End Fittings

Part Number	Size/Type in (mm)
08036157	3/4"-10 male end for 5/8" (16 mm) rod
08036156	3/4"-10 female end for 5/8" (16 mm) rod
08035851	Epoxy Resin, Single Pack

**!** ORDER CAREFULLY  
This item is made-to-order  
and is not returnable.



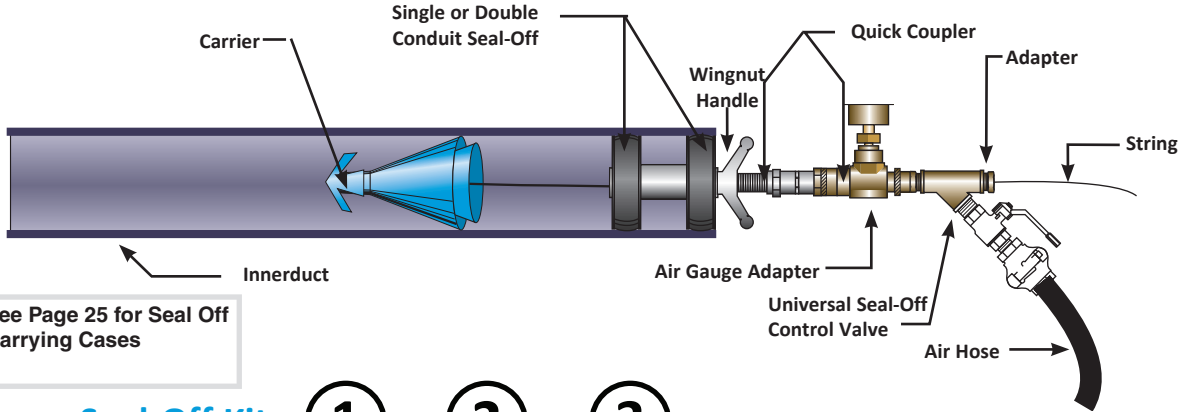




# LOW PRESSURE SEAL-OFFS

## Conduit Seal-Offs

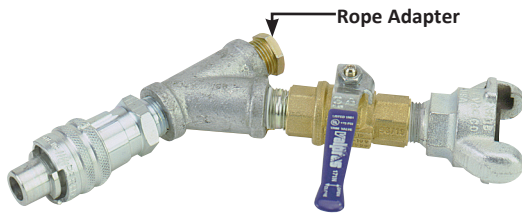
Conduit Seal-Offs utilize compressed air (up to 15 psi) to force Line Carriers, Cable Chutes or other projectiles (see page 24-25) thru the duct system while dragging a pull string or pull tape (page 30). Once the tape or string is installed, pulling rope (see page 31) or steel cable can be pulled back. In the case of small conductors or fiber cables, it's possible that the string or tape will handle the job. For your compressor needs, see page 122.



**!** See Page 25 for Seal Off Carrying Cases

Create your Seal-Off Kit: **1** + **2** + **3**

**!** 15 PSI MAX PRESSURE



**1**

### Universal Seal-Off Control Valve

The Seal-Off Control Valve Body combines with an Innerduct Seal-Off, Single Conduit Seal-Off or Double Conduit Seal-Off and recommended Air Gauge Adapter to form a complete Seal-Off Assembly. The interchangeable attachments provide flexibility by allowing the purchase of a single valve body that can be used in a variety of applications depending on conduit size. The Seal-Off Control Valve Body comes standard with an air valve to regulate flow, a standard claw type air fitting and a 3/16" (5 mm) Rope Adapter.

Part Number	Description
08032165	Seal-Off control valve body



**2**

### Individual Innerduct Seal-Offs

The Innerduct Seal-Offs fit the Seal-Off Control Body and thread into Innerduct. See available sizes below.

Part Number	Description	Nominal Duct Size		Innerduct I.D. Range	
		(in)	(mm)	(in)	(mm)
08034321	3/4" Innerduct Seal-Off	3/4	.72-1.00	.72-.94	19-24
08034315	1" Innerduct Seal-Off	1	.93-1.19	.93-1.19	24-30
08034316	1 1/4" Innerduct Seal-Off	1 1/4	1.18-1.44	1.18-1.44	30-37
08034317	1 1/2" Innerduct Seal-Off	1 1/2	1.31-1.69	1.31-1.69	33-43
08034318	2" Innerduct Seal-Off	2	1.93-2.31	1.93-2.31	49-59
08032999	Case, Innerduct Seal Off (Holds 4 Seal-Offs)				

**!** 15 PSI MAX PRESSURE



**2**

### Individual Conduit Seal-Offs

The Conduit Seal-Offs fit the Seal-Off Control Body and accommodates larger conduit. See available sizes below.

Part Number	Description	Nominal Duct Size		Duct I.D. Range	
		(in)	(mm)	(in)	(mm)
08032900	2" Conduit Seal-Off	2	1.93-2.36	1.93-2.36	49-60
08032905	2 1/2" Conduit Seal-Off	2 1/2	2.40-2.76	2.40-2.76	61-70
08032910	3" Conduit Seal-Off	3	2.87-3.31	2.87-3.31	73-84
08032915	3 1/2" Conduit Seal-Off	3 1/2	3.50-3.75	3.50-3.75	89-95
08032920	4" Conduit Seal-Off	4	3.54-4.25	3.54-4.25	90-108
08032925	5" Conduit Seal-Off	5	4.72-5.37	4.72-5.37	120-136
08032930	6" Conduit Seal-Off	6	5.50-6.29	5.50-6.29	140-160
08032935	8" Conduit Seal-Off	8	7.83-8.27	7.83-8.27	199-210
08032995	Case, Conduit Seal Off Single (Holds 7 Seal-Offs)				



# LOW PRESSURE SEAL-OFFS



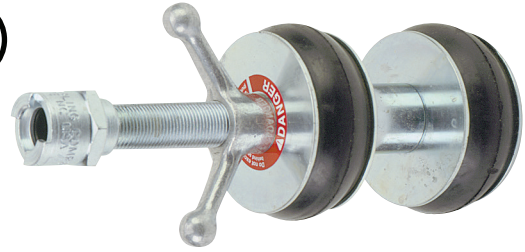
FISHING & RODDING

## Individual Double Seal-Offs

The Conduit Seal-Offs fit the Seal-Off Control Body and accommodate larger pipes. See available sizes below.

Part Number	Description	Nominal Duct Size (in)	Duct I.D. Range (in) (mm)	
08032940	2" Double Seal-Off	2	1.93–2.36	49–60
08032945	2½" Double Seal-Off	2½	2.40–2.76	61–70
08032950	3" Double Seal-Off	3	2.87–3.31	73–84
08032955	3½" Double Seal-Off	3½	3.50–3.75	89–95
08032960	4" Double Seal-Off	4	3.54–4.25	90–108
08032965	5" Double Seal-Off	5	4.72–5.37	120–136
08032970	6" Double Seal-Off	6	5.50–6.29	140–160
08032975	8" Double Seal-Off	8	7.83–8.27	199–210
08032997	Case, Conduit Seal Off Double (Holds 5 Seal-Offs)			

2



## Air Gauge Adapter

The Air Gauge Adapter allows the monitoring of pressures reached when using a Seal-Off Assembly. While optional, it's highly recommended to avoid exceeding the 15 PSI maximum.

Part Number	Description
08032175	Air Gauge Adapter

3



## Rope Adapter Kit

The interchangeable Rope Adapters for the Seal-Off Control Body allow larger strings and tapes to be utilized while minimizing back pressure air loss. Individual adapters are available in 3/16" (5 mm), 1/4" (6 mm) and 3/8" (10 mm) or they can be purchased as a kit – one of each.

Part Number	Description
08032181	Adapter Kit for Conduit Seal-Offs
08032190	3/16" (5 mm) Rope Adapter
08032191	1/4" (6 mm) Rope Adapter
08032170	3/8" (10 mm) Rope Adapter



## Replacement Seals for Conduit Seal-Offs

The rubber seals on single and double Conduit Seal-Offs should be replaced when they no longer grip properly or in cases of significant air loss.

Part Number	Nominal Duct Size (in)
08082121	2
08082126	2½
08082131	3
08082136	3½
08082141	4
08082151	5
08082161	6



## Replacement Handle for Single & Double Seal-Offs

The Replacement Handle allows the repair of Seal-Offs where the wing nut has broken or is missing. The handle fits both Single and Double Seal-Offs.

Part No.	Description
08032179	Replacement Handle for Single and Double Seal-Offs





# POWER DART® BLOWER

FISHING & RODDING

## Power Dart® Blower

The Power Dart Blower provides a method to install Pull String or Pull Tape into longer duct runs without the need for an air compressor. Utilizing three independent, high volume blower motors, this unit delivers 300 CFM (8.5 m<sup>3</sup>/min) @ 3 PSI (.2 Bar) – more than enough to blow 1/2" (12.7 mm) pull string or pull tape 2000' (610 m) into conduit up to 6" (152 mm) in diameter. By running one, two or all three motors, the operator can regulate the speed of the installation. The Condux® Power Dart® Blower weighs only 31 lbs (14 kg) making it a breeze to carry from install to install.

\*Requires 110V/220V AC Power or 3,000 Watt Generator. Comes w/30 Amp Twist Plug Installed.

Base Part No.	Description
<b>08030003</b>	<b>110V Power Dart Blower</b> (Includes: 110V Power Dart Blower Unit, Hose, Seal-Off Handle & Seal-Offs for 1/2" - 6" (13 mm-152 mm) conduit <b>Carriers not included.</b> )
<b>08030004</b>	<b>220V/240V Power Dart Blower</b> (Includes: 220V/240V Power Dart Blower Unit, Hose, Seal-Off Handle & Seal-Offs for 1/2" - 6" (13 mm-152 mm) conduit <b>Carriers not included.</b> )
<b>08030060</b>	<b>Power Dart Blower Accessory Bag</b> Convenient, canvas bag holds Power Dart hose. Inner bag holds Line Carriers, Foam Carriers, Seal-Off Body and Seal-Offs.
<b>08030011</b>	<b>Power Dart Blower Carrier Kit</b>
Qty	Part Number Description
(2)	08067900 2" (51 mm) Line Carrier
(1)	08030300 4" (102 mm) Line Carrier
(2)	08031820 2" (51 mm) Duct Projectile
(1)	08031840 4" (102 mm) Duct Projectile
(1)	08033532 Carrier, Chute 2" (51 mm) Nylon
(1)	08033548 Carrier, Chute 3" (76 mm) Nylon
(1)	08033564 Carrier, Chute 4" (102 mm) Nylon
(1)	08039400 Seal-Off Body Handle
(1)	08066800 Power Dart Seal-Off 1 1/2"- 2 1/2" (38-64 mm)
(1)	08039500 Power Dart Seal-Off 2 1/2"- 6" (64-152 mm)



Power Dart Blower  
Part # 08030003



Accessory Bag  
Part # 08030060



Optional Carrier Kit  
Part # 08030011

## Replacement Accessories

### Power Dart Blower Seal-Off

Part Number	Duct Size	
	(in)	(mm)
08039700*	1/2-1 1/4	13-32
08066800	1 1/2-2 1/2	38-64
08039500	2 1/2-6	64-152

\*Requires Part Number 08066800

### Power Dart Blower Seal-Off Handle

Part Number	Duct Size	
	(in)	(mm)
08039400	1/2-6	13-152

### Power Dart Blower Hose

Part Number	Description
08039300	25' (7.6 m) x 2 1/2" (64 mm) heavy duty hose
08039301	Replacement hose end fitting
08039302	Outlet Fitting on the power dart blower box



Seal-Off, 1/2"-1 1/4" (13-32 mm)  
Part # 08039700\*

Seal-Off, 1 1/2"-2 1/2" (38-64 mm)  
Part # 08066800

Seal-Off Handle  
Part # 08039400

Seal-Off, 2 1/2"-6" (64-152 mm)  
Part # 08039500

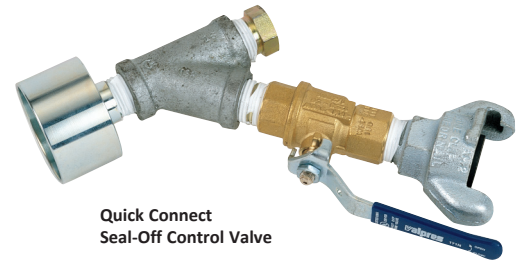


# POWER DART® BLOWER ACCESSORIES



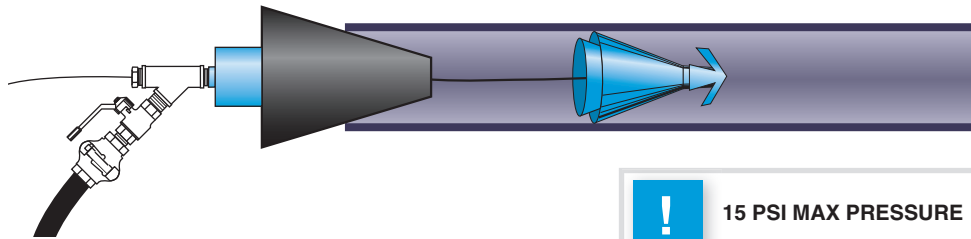
## Quick Connect Seal-Off Control Valve

The Quick Connect Seal-Off Control Valve is used to connect the Power Dart Blower Seal-Offs to a standard air compressor claw fitting. Comes equipped with an air flow valve and a universal hose coupling for attachment to most compressors. A 3/16" (5 mm) rope adapter included. See page 21 for additional rope adapter sizes.



Quick Connect Seal-Off Control Valve

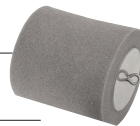
Part Number	Description
08032185	Quick connect seal-off control valve



## Carrier Options

**Foam Carrier:** Lightweight carrier easily blows through duct. Best suited for short runs and runs with multiple bends.

Part Number	Description
08078200	1/2" (13 mm) Foam Carrier
08078300	3/4" (19 mm) Foam Carrier
08032200	1" (25 mm) Foam Carrier
08032300	1 1/4" (32 mm) Foam Carrier
08039800	1 1/2" (38 mm) Foam Carrier
08033500	45 mm Foam Carrier
08032400	2" (51 mm) Foam Carrier
08078400	2 1/2" (64 mm) Foam Carrier
08032500	3" (76 mm) Foam Carrier
08032100	3 1/2" (89 mm) Foam Carrier
08032600	4" (102 mm) Foam Carrier
08059100	5" (127 mm) Foam Carrier
08059200	6" (152 mm) Foam Carrier



**Line Carrier:** Fast and efficient plastic carriers for fishing with high-speed blowers even in out-of-round duct. Carrier will travel over minor obstructions in duct.

Part Number	Description
08067900	2" (51 mm) Line Carrier
08030100	3" (76 mm) Line Carrier
08030200	3 1/2" (89 mm) Line Carrier
08030300	4" (102 mm) Line Carrier
08030400	5" (127 mm) Line Carrier
08030500	6" (152 mm) Line Carrier



**Cable Chute Line Carrier:** designed to pass through conduit without damaging an existing cable. All Cable Chute Line Carriers are made with the highest quality fabrics (nylon or leather) and attention to detail. All products are handmade and go through a series of quality checks prior to being shipped out.

Part Number	Description
08033512	Carrier, Chute 0.75" (19mm) Nylon
08033516	Carrier, Chute 1.00" (25mm) Nylon
08033520	Carrier, Chute 1.25" (32 mm) Nylon
08033524	Carrier, Chute 1.50" (38mm) Nylon
08033532	Carrier, Chute 2.00" (51 mm) Nylon
08033548	Carrier, Chute 3.00" (76 mm) Nylon
08033564	Carrier, Chute 4.00" (102 mm) Nylon
08033580	Carrier, Chute 5.00" (127mm) Nylon
08033596	Carrier, Chute 6.00" (152mm) Nylon
08033648	Carrier, Chute 3.00" (76 mm) Nylon w/Spring
08033664	Carrier, Chute 4.00" (102mm)Nylon w/Spring
08033680	Carrier, Chute 5.00" (127mm)Nylon w/Spring
08033696	Carrier, Chute 6.00" (152mm)Nylon w/Spring
08033732	Carrier, Chute 2.00" (51mm) Leather
08033748	Carrier, Chute 3.00" (76mm) Leather
08033764	Carrier, Chute 4.00" (102mm) Leather
08033796	Carrier, Chute 6.00" (152mm) Leather



**Duct Projectile Options:** Flexible rubber cones are durable for many repeated uses. Fast and efficient for long runs with easy pull-back.

Part Number	Description
08031812	1 1/4" (32 mm) Duct Projectile
08031814	1 3/8" (35 mm) Duct Projectile
08031815	1 1/2" (38 mm) Duct Projectile
08031816	1 5/8" (41 mm) Duct Projectile
08031820	2" (51 mm) Duct Projectile
08031822	2 1/4" (57 mm) Duct Projectile
08031825	2 1/2" (64 mm) Duct Projectile
08031830	3" (76 mm) Duct Projectile
08031835	3 1/2" (89 mm) Duct Projectile
08031840	4" (102 mm) Duct Projectile
08031844	4 1/4" (108 mm) Duct Projectile
08031846	4 1/2" (114 mm) Duct Projectile
08031850	5" (127 mm) Duct Projectile
08031860	6" (152 mm) Duct Projectile
08031880	8" (203 mm) Duct Projectile





# CONDUIT CARRIERS



## Foam Carriers

Lightweight carrier easily blows through duct. Best suited for short runs and runs with multiple bends.

Part Number	Duct Size		Max O.D.	
	(in)	(mm)	(in)	(mm)
08078200	1/2	13	.50	13
08078300	3/4	19	.75	19
08032200	1	25	1.00	25
08032300	1 1/4	32	1.25	32
08039800	1 1/2	38	1.50	38
08033500		45		45
08032400	2	51	2.00	51
08078400	2 1/2	64	2.50	64
08032500	3	76	3.00	76
08032100	3 1/2	89	3.50	89
08032600	4	102	4.00	102
08059100	5	127	5.00	127
08059200	6	152	6.00	152



08067900 only

## Line Carriers

Fast and efficient plastic carriers for fishing with high-speed blowers even in out-of-round duct. Carrier will travel over minor obstructions in duct.

Part Number	Duct Size		Max O.D.	
	(in)	(mm)	(in)	(mm)
08067900	2	51	2.06	52
08030100	3	76	3.06	78
08030200	3 1/2	89	3.56	90
08030300	4	102	4.06	103
08030400	5	127	5.06	129
08030500	6	152	6.06	154



## Cable Chute Line Carriers

Condux Cable Chute Line Carriers are designed to pass through conduit without damaging the conduit or existing cable. To use a Cable Chute Line Carrier, tie a line to a Chute, insert the Chute into the Conduit or duct, and blow compressed air propelling the Chute to the end of the duct.

### Cable Chute Advantages

- No damage to cable or conduit
- Eliminates need for duct rodding
- Durable and flexible
- Quick and easy installation
- Cost effective



All Cable Chute Line Carriers are made with the highest quality fabrics (nylon or leather) and attention to detail. All products are hand made and go through a series of quality checks prior to being shipped out.

Part Number	Description	(mm)
08033512	Carrier, Chute 0.75 Nylon	19
08033516	Carrier, Chute 1.00 Nylon	25
08033520	Carrier, Chute 1.25 Nylon	32
08033524	Carrier, Chute 1.50 Nylon	38
08033532	Carrier, Chute 2.00 Nylon	51
08033548	Carrier, Chute 3.00 Nylon	76
08033564	Carrier, Chute 4.00 Nylon	102
08033580	Carrier, Chute 5.00 Nylon	127
08033596	Carrier, Chute 6.00 Nylon	152
08033648	Carrier, Chute 3.00 Nylon w/Spring	76
08033664	Carrier, Chute 4.00 Nylon w/Spring	102
08033680	Carrier, Chute 5.00 Nylon w/Spring	127
08033696	Carrier, Chute 6.00 Nylon w/Spring	152
08033732	Carrier, Chute 2.00 Leather	51
08033748	Carrier, Chute 3.00 Leather	76
08033764	Carrier, Chute 4.00 Leather	102
08033796	Carrier, Chute 6.00 Leather	152

## Duct Projectile

Flexible rubber cones are durable for many repeated uses. Fast and efficient for long runs with easy pull-back.

Part Number	Duct Size		Max O.D.	
	(in)	(mm)	(in)	(mm)
08031812	1¼	32	1.25	32
08031814	1⅝	35	1.37	35
08031815	1½	38	1.50	38
08031816	1⅞	41	1.62	41
08031820	2	51	2.00	51
08031822	2¼	56	2.20	56
08031825	2½	64	2.50	64
08031830	3	76	3.00	76
08031835	3½	89	3.50	89
08031840	4	102	4.00	102
08031844	4¼	108	4.25	108
08031846	4½	115	4.51	115
08031850	5	127	5.00	127
08031860	6	152	6.00	152
08031880	8	203	8.00	203



## Replacement Cones For Duct Projectile

Original equipment replacement cones.

Part Number	Duct Size		Max O.D.	
	(in)	(mm)	(in)	(mm)
08031805	1¼	32	1.25	32
08031803	1⅝	35	1.38	35
08031806	1½	38	1.50	38
08031804	1⅞	41	1.63	41
08031819	2	51	2.00	51
08031821	2¼	56	2.20	56
08031826	2½	64	2.50	64
08031831	3	76	3.00	76
08031802	3½	89	3.50	89
08031841	4	102	4.00	102
08031801	4¼	108	4.25	108
08031847	4½	115	4.51	115
08031851	5	127	5.00	127
08031861	6	152	6.00	152
08031881	8	203	8.00	203





# WINCH LINE BLOWER

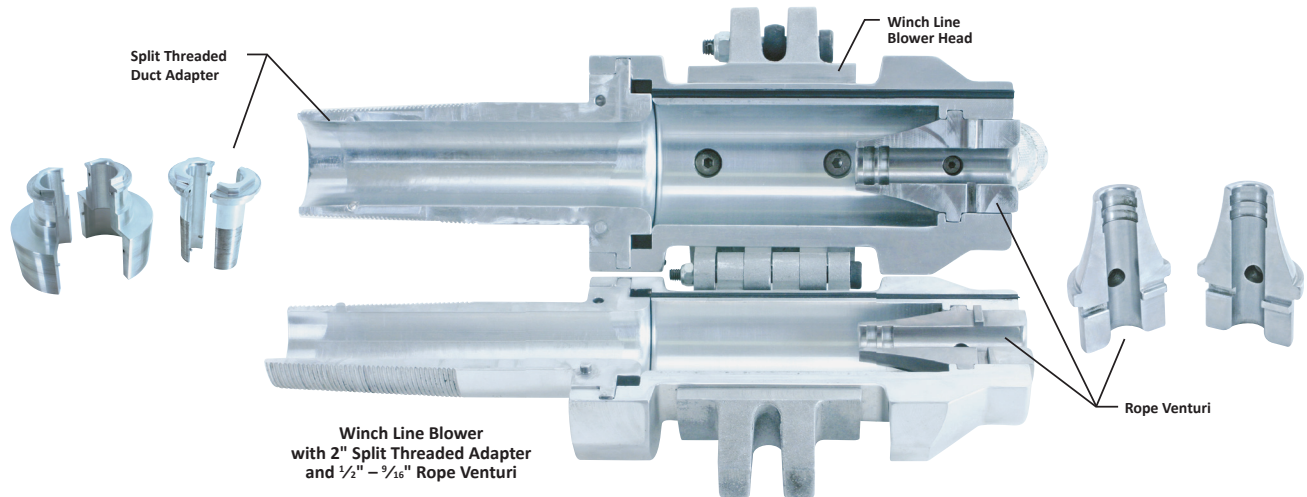


## The Condux Winch Line Blower

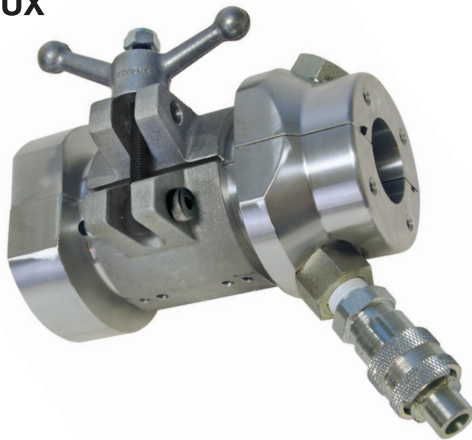
The Condux Winch Line Blower is a tool for installing winch line, rope or pull tape into conduit. It turns the job of placing winch line into one easy step, eliminating the need to blow a string and pull back a rope.

Using compressed air, 90 psi (6.2 bar) and 100 cfm (2.8 cmm), the winch line blower can propel steel winch line, rope or tape in conduit from 1" to 6" in diameter.

Installation is easy. No special tools are required.



Split Threaded Adapter Part No.	Duct Size (in)	(Duct I.D. Range)	Rope Venturi			Conduit Carrier
			1/4" - 3/8" (6 mm - 10 mm)	1/2" - 9/16" (12.7 mm - 14 mm)	7/8" (22 mm)	
08201108	.75	0.83" - .93" (21 mm - 24 mm)	08201089	08201086	08201090	Call Factory
08201110	1	0.90" - 1.13" (23 mm - 29 mm)	08201089	08201086	08201090	Call Factory
08201112	1.25	1.25" - 1.40" (32 mm - 36 mm)	08201089	08201086	08201090	Call Factory
08201115	1.5	1.40" - 1.65" (36 mm - 42 mm)	08201089	08201086	08201090	Call Factory
08201020	2	1.91" - 2.10" (49 mm - 53 mm)	08201089	08201086	08201090	08202020
08201025	2.5	2.29" - 2.47" (58 mm - 63 mm)	08201089	08201086	08201090	08202520
08201030	3	2.83" - 3.10" (72 mm - 78 mm)	08201089	08201086	08201090	08202920
08201035	3.5	3.25" - 3.60" (83 mm - 91 mm)	08201089	08201086	08201090	08203020
08201041	4	3.80" - 4.06" (97 mm - 103 mm)	08201089	08201086	08201090	08203920
08201045	4.5	4.20" - 4.70" (107 mm - 119 mm)	08201089	08201086	08201090	08204020
08201051	5	4.71" - 5.08" (120 mm - 129 mm)	08201089	08201086	08201090	08204920
08201061	6	5.61" - 6.10" (142 mm - 155 mm)	08201089	08201086	08201090	08205920



## PULLING TAPE INSTALLATION AS AN OVERLAY



Change the Rope Plug on the Winchline Body to the Rope Adapter.



Thread pulling tape through the Rope Adapter.



Attach cable chute line carrier to Pull Tape.



Install cable chute line carrier into duct.



Close adapter around the pulling tape and existing cable. Install into duct.



Attach body to the adapter. Close and tighten, running existing cable out of the back.

## WINCH LINE & ROPE INSTALLATION



Attach winch line or rope to carrier.



Install carrier into duct.



Close adapter around the winch line or rope. Install into duct.



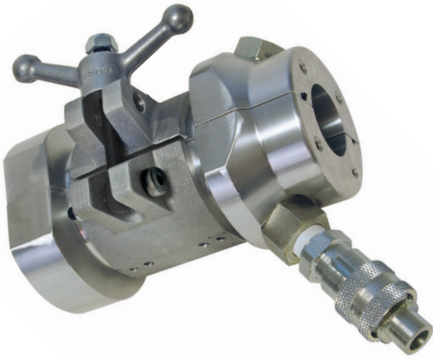
Install Winch Line Body and tighten the clamp.





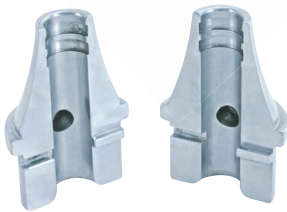


# WINCH LINE BLOWER



## Winch Line Body

Part No.	Description
08201080	Winch Line Body Assembly 2" - 6" (body includes 1/2" - 9/16" venturi set)



## Venturis

Part No.	Description
08201089	Venturi, Winch Line 1/4" - 3/8" set
08201086*	Venturi, Winch Line 1/2" - 9/16" set
08201090	Venturi, Winch Line 7/8" set

\* Comes standard with Winch Line Body



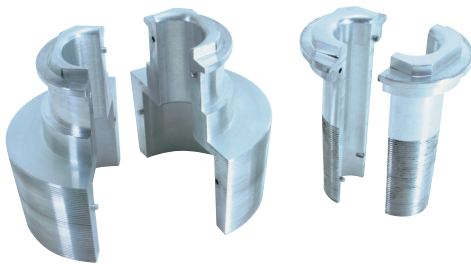
## Plug

Part No.	Description
08780223	Venturi Plug (Used to seal off back of Winch Line Blower to blow in pull tape or pea line)



## Hose & Valve

Part No.	Description
08201015	Hose Valve Assembly



## Adapters

Part No.	Description
08201108	Winch Line Duct Adapter .75"
08201110	Winch Line Duct Adapter 1"
08201112	Winch Line Duct Adapter 1.25"
08201115	Winch Line Duct Adapter 1.5"
08201020	Winch Line Duct Adapter 2"
08201025	Winch Line Duct Adapter 2.5"
08201030	Winch Line Duct Adapter 3"
08201035	Winch Line Duct Adapter 3.5"
08201041	Winch Line Duct Adapter 4"
08201045	Winch Line Duct Adapter 4.5"
08201051	Winch Line Duct Adapter 5"
08201061	Winch Line Duct Adapter 6"

**!** Not for use in steel conduit.

See ranges on page 26.



# WINCH LINE BLOWER



FISHING & RODDING

## Carriers

Part Number	Description	Carrier OD
08202020	Carrier, Winch Line 2" SCH40&80, TC6	2.05" (53 mm)
08202520	Carrier, Winch Line 2.5" SCH40&80	2.50" (64 mm)
08202920	Carrier, Winch Line 3" SCH 40&80	3.13" (80 mm)
08203020	Carrier, Winch Line 3" SCH40, TC6&8	3.50" (89 mm)
08203420	Carrier, Winch Line 3.5" SCH 40&80	3.75" (95 mm)
08203520	Carrier, Winch Line 3.5" TC6&8	4.00" (102 mm)
08203920	Carrier, Winch Line 4" SCH40&80, TEL	4.25" (108 mm)
08204020	Carrier, Winch Line 4" SCH40,TEL	4.50" (114 mm)
08204920	Carrier, Winch Line 5" SCH 40&80	5.25" (133 mm)
08205020	Carrier, Winch Line 5" SCH40, TC6&8	5.50" (140 mm)
08205920	Carrier, Winch Line 6" SCH 40&80	6.25" (159 mm)
08206020	Carrier, Winch Line 6" SCH40, TC6&8	6.50" (165 mm)



**!** Not for use in steel conduit.

Alternate carrier options available on pages 24-25. See: Line Carriers, Cable Chute Line Carriers and Duct Projectiles.

## Rope Adapter

Rope Adapter  
08201091



## Storage Case

Storage Case  
08201093





# POLY LINE PAIL/MEASURING & PULL TAPE



## Poly Line Pail

Line attaches to the back of a foam carrier, inflatable carrier or line carrier and is used to pull back a rope. Packaged in a weather-proof, reusable plastic bucket with lid.

Part Number	Break Strength		Length	
	(lbs)	(N)	(ft)	(m)
08561285*	200	890	6,500	1,981
08561297*	450	2,002	2,500	762

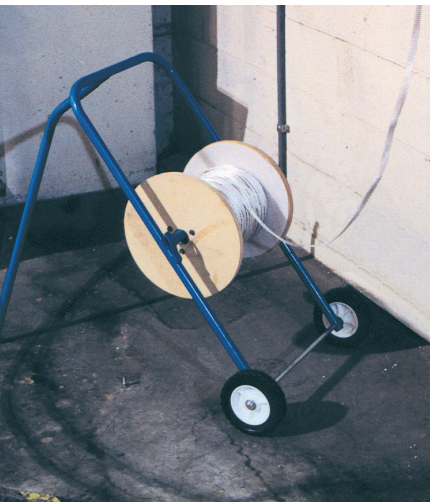
\*Pallet quantities of 48 available.

## Poly Line Replacement String

Replacement string refills.

Part Number	Break Strength		Length	
	(lbs)	(N)	(ft)	(m)
08561284*	200	890	6,500	1,981
08561299*	450	2,002	2,500	762

\*Pallet quantities of 80 available.



## Conduit Measuring & Pull Tape, Polyester

For pulling fiber optic or coaxial cable through innerduct or for determining exact wall-to-wall measurements in duct runs.

Part Number	Break Strength		Approx Width		Length	
	(lbs)	(N)	(in)	(mm)	(ft)	(m)
08073900*	130	578	$\frac{3}{16}$	5	3,000	914

\*Pallet quantities of 48 available.



## Polyester Woven Pre-Lubed Tape

Recommended pulling tape for fiber optic and coaxial cable pulling. Pre-lubricated tape provides a low coefficient of friction for easier cable pulling. Flat design distributes the side-wall load and reduces duct burn-through. Marked with accurate sequential footage markings.

Part Number	Break Strength		Approx Width		Length	
	(lbs)	(N)	(in)	(mm)	(ft)	(m)
08096203	400	1,779	$\frac{1}{4}$	6	3,000	915
08096503	600	2,669	$\frac{3}{8}$	10	3,000	915
08075003	1,250	5,560	$\frac{1}{2}$	13	3,000	915
08075103	1,800	8,006	$\frac{5}{8}$	16	3,000	915
08096303	2,500	11,120	$\frac{3}{4}$	19	3,000	915



# PULLING ROPE & PULLING TAPE



## Polyester Pull Tape Pail

Designed for better mobility and faster deployment, pulling tape in a pail allows for moving from install to install without the hassle of carrying a tape stand.

Part Number	Break Strength		Approx Width		Length	
	(lbs)	(N)	(in)	(mm)	(ft)	(m)
08096001	400	1,779	1/4	6	4,500	1,372
08096003	1,800	8,006	5/8	16	1,300	396



## Double-Braided Cable Pulling Rope

Premium quality rope recommended for cable pulling. Complete with spliced eye on each end. Double-braided construction offers high working loads and tensile strength without kinking. Contact factory for additional rope specifications.

Part Number	Diameter		Length		Break Strength	
	(in)	(mm)	(ft)	(m)	(lbs)	(N)
08091003	0.50	13	300	91	5,940	26,422
08091006	0.50	13	600	183	5,940	26,422
08091012	0.50	13	1,200	366	5,940	26,422
08090903	0.63	16	300	91	9,000	40,034
08090906	0.63	16	600	183	9,000	40,034
08090912	0.63	16	1,200	366	9,000	40,034
08091103	0.88	22	300	91	17,325	77,065
08091106	0.88	22	600	183	17,325	77,065
08091112	0.88	22	1,200	366	17,325	77,065



## Pulling Tape

A flat woven replacement for 1/4" polypropylene rope that provides a lower coefficient of friction due to its flat woven design. Drastically reduces the chance of burn through that is associated with ropes, and has an elongation of less than 10% compared to Polypropylene rope which is 25%+. Not available printed.

Part Number	Break Strength		Approx. Width		Length	
	(lbs)	(N)	(in)	(mm)	(ft)	(m)
08099703	1,130	5,026	1/2	13	3,000	914

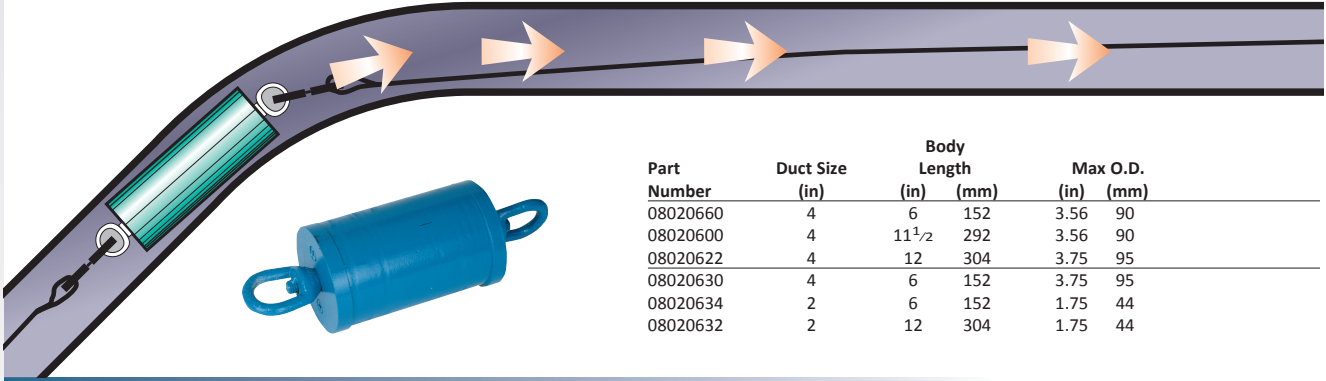




# MANDRELS

## Wood Test Mandrels

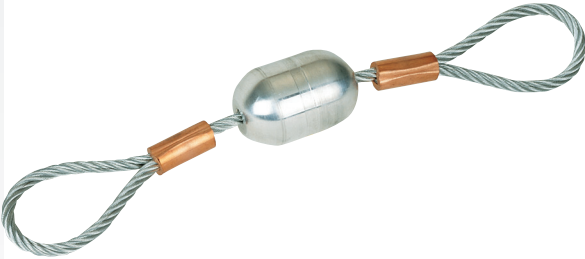
Pull through duct to prove joint integrity and test for out-of-round duct. 2,240 lbs. (9,964 N) load capacity. Wood body with steel end caps and pulling eyes.



Part Number	Duct Size (in)	Body Length		Max O.D.	
		(in)	(mm)	(in)	(mm)
08020660	4	6	152	3.56	90
08020600	4	11 <sup>1</sup> / <sub>2</sub>	292	3.56	90
08020622	4	12	304	3.75	95
08020630	4	6	152	3.75	95
08020634	2	6	152	1.75	44
08020632	2	12	304	1.75	44

## Aluminum Test Mandrels

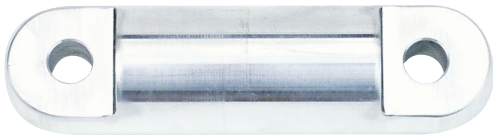
Pull through duct to prove joint integrity and test for out-of-round duct.



Part Number	Duct Size (in)	Body Length		Max O.D.		Load Capacity	
		(in)	(mm)	(in)	(mm)	(lbs)	(N)
08059515	1 <sup>1</sup> / <sub>2</sub>	1.74	44	1.18	30	2,200	9,786
08059520	2	2.40	61	1.58	40	2,200	9,786
08059525	2 <sup>1</sup> / <sub>2</sub>	2.98	76	1.95	50	2,200	9,786
08059530	3	3.54	90	2.33	59	2,200	9,786
08059535	3 <sup>1</sup> / <sub>2</sub>	4.10	104	2.70	69	4,500	20,016
08059540	4	4.84	123	3.20	81	4,500	20,016
08059550	5	5.98	152	3.95	100	4,500	20,016
08059560	6	7.08	180	4.70	119	4,500	20,016
08059580	8	9.44	240	6.38	162	4,500	20,016

## Aluminum Test Slugs

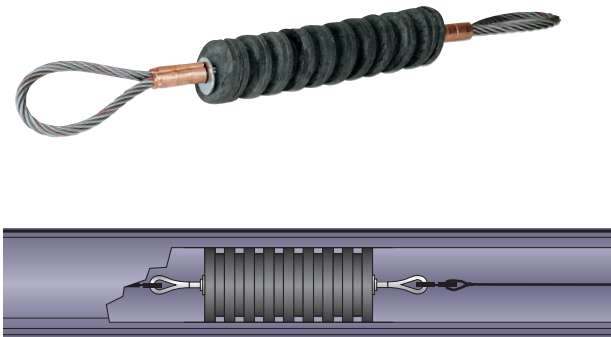
Pull through duct to prove joint integrity and test for out-of-round duct.



Part Number	Duct Size (in)	Body Length		Max O.D.		Load Capacity	
		(in)	(mm)	(in)	(mm)	(lbs)	(N)
08059005	1	1.71	43	0.860	22	2,200	9,786
08059015	1 <sup>1</sup> / <sub>4</sub>	2.17	55	1.086	28	2,200	9,786
08059025	1 <sup>1</sup> / <sub>2</sub>	2.49	63	1.243	32	2,200	9,786

## Rubber Duct Swab

Ideal for cleaning and assisting in the spreading of lubricant throughout the duct. 7,000 lbs. (31,136 N) load capacity.



Part Number	Duct Size (in)	Body Length		Max O.D.	
		(in)	(mm)	(in)	(mm)
08028820*	2	10	254	2.00	51
08028830	3	10	254	3.00	76
08028700	3 <sup>1</sup> / <sub>2</sub>	10	254	3.50	89
08028800	4	10	254	4.00	102
08058700	5	10	254	5.00	127
08058800	6	10	254	6.00	152
08022880	8	10	254	8.00	203

\*4,500 lbs. (20,016 N) load capacity.



**CONDEX**

# MANDRELS



FISHING & RODDING

## Short Rubber Slug

For proving duct integrity and for spreading cable pulling lubricant especially in tight-radius bends. 4,500 lbs. (20,016 N) load capacity.

Part Number	Duct Size (in)	Body Length		Max O.D.	
		(in)	(mm)	(in)	(mm)
08082020	2	3.25	83	2.00	51
08082025	2½	3.25	83	2.50	64
08082030	3	3.25	83	3.00	76
08082035	3½	3.25	83	3.50	89
08082040	4	3.25	83	4.00	102
08082050	5	3.25	83	5.00	127
08082060	6	3.25	83	6.00	154
08082080	8	3.25	83	8.00	203



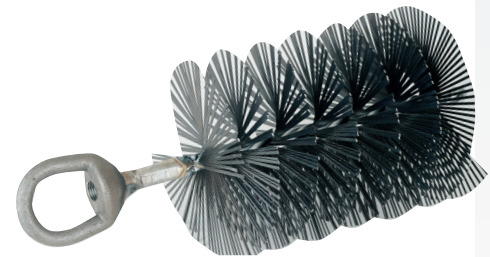
## Wire Brush Mandrel

Flat steel bristles with a pulling eye on one end and a loop on the other end. Easily removes sand, grit and other light obstructions from the duct. 800 lbs. (3,558 N) load capacity.

Part Number	Duct Size (in)	Body Length		Overall Length		Max O.D.	
		(in)	(mm)	(in)	(mm)	(in)	(mm)
08028904	1¼	4.25	108	7.50	191	1.00	25
08028905	1½	4.25	108	7.50	191	1.25	32
08028900	2	4.25	108	9.16	232	1.75	44
08046000	2½	4.25	108	9.16	232	2.25	57
08067100	3	5.50	140	9.16	232	2.75	70
08067200	3½	5.00	127	9.16	232	3.25	82
08029000	4	6.75	171	9.16	232	3.75	95
08029100	5	6.50	165	9.16	232	4.75	121
08068100	6	6.75	171	9.16	232	5.75	146
08029080	8	4.75	121	9.73	247	7.75	197



08028904 & 08028905



## Heavy Duty Wire Brush Mandrels

Heavy-duty steel bristles with pulling eyes on each end. For removing obstructions from the duct.

Part Number	Duct Size (in)	Body Length		Max O.D.		Load	
		(in)	(mm)	(in)	(mm)	(lbs)	(N)
08900546	2	3.5	89	1.75	44	1,240	5,516
08900547	2½	4.25	108	2.25	57	1,240	5,516
08900548	3	5.25	133	2.75	70	1,240	5,516
08900549	3½	5.25	133	3.25	82	2,240	9,964
08900550	4	5.25	133	3.75	95	2,240	9,964
08900551	5	5.00	123	4.75	121	2,240	9,964
08900552	6	5.00	123	5.75	146	2,240	9,964
08900553	8	5.00	123	7.75	196	2,240	9,964



## Flexible Steel Mandrel

Steel discs in graduated sizes make this mandrel ideal for removing obstructions in duct with extreme bends. 7,000 lbs. (31,136 N) load capacity.

Part Number	Duct Size (in)	Body Length		Max O.D.	
		(in)	(mm)	(in)	(mm)
08021700	2*	7.31	186	1.75	44
08021925	2½	11.25	286	2.25	57
08021800	3	11.25	286	2.75	70
08049400	3½	11.25	286	3.25	83
08067400	4 Sch 80	11.25	286	3.50	89
08021900	4	11.25	286	3.75	95
08067500	5 Sch 80	11.25	286	4.25	108
08058900	5	11.25	286	4.75	121
08067600	6 Sch 80	11.25	286	5.50	140
08059000	6	11.25	286	5.75	146
08079500	8	11.25	286	7.75	197

\*2,000 lbs. (8,896 N) load capacity.

**!** When using the flexible steel mandrel there is the potential for duct shaving to occur.

